

44

- Feb 7th 1887 -

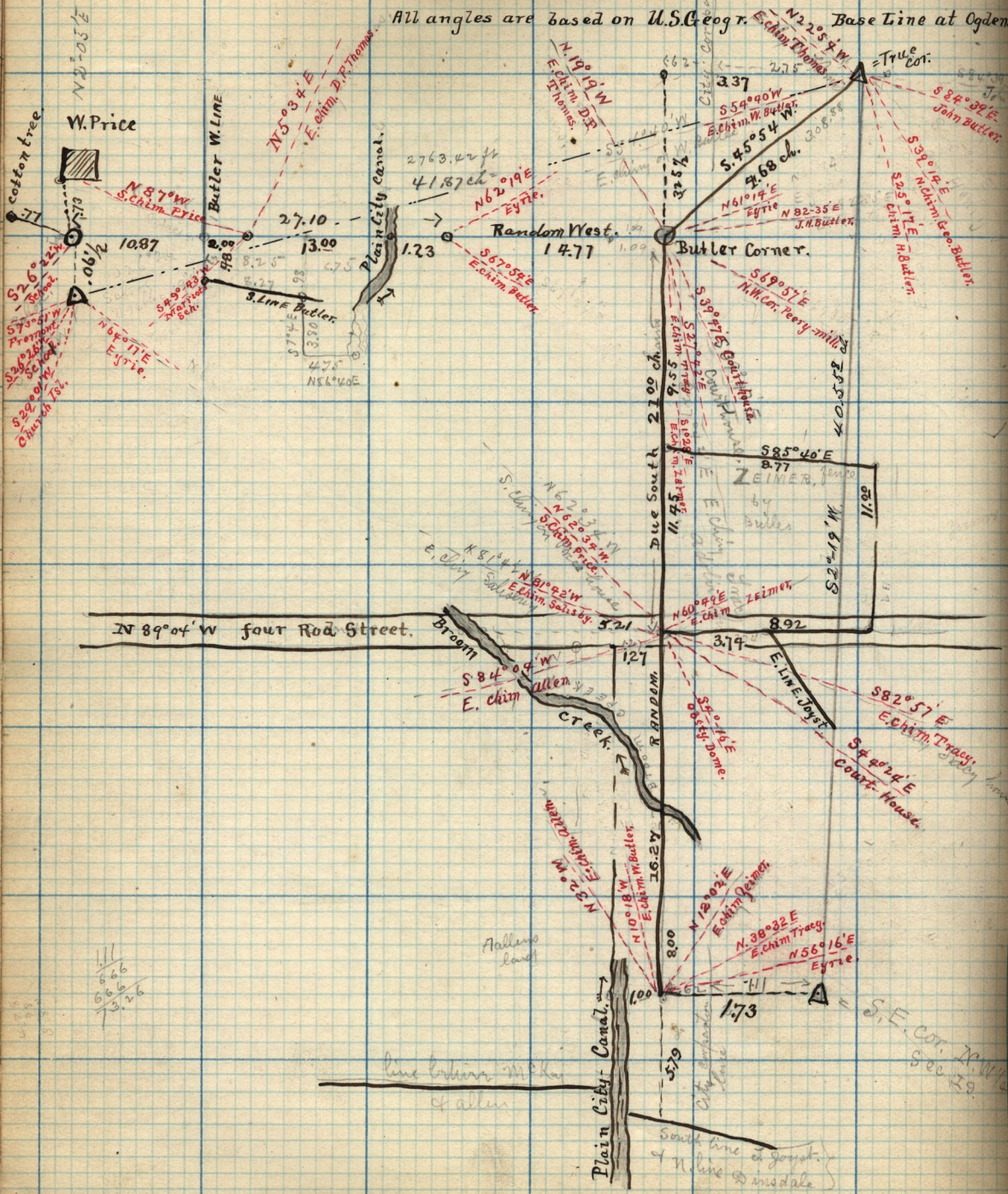
Survey for W. Butler.

N.W. 1/4 Sec. 19 T6 N. R. 1 W.

total E & W = 4187 ch.

Notes by Comptroller.
Plum Sec. 17 N. 1/4 or
80 rods to the
on the side of
the 17th.

All angles are based on U.S.C. Geogr. Base Line at Ogden.



0.06 1/2
 N 42° 05' E
 Cotton tree
 W. Price
 N 87° 19' W
 E. chimm Price
 10.87
 S 26° 22' E
 S 73° 32' W
 S 20° 12' W
 S 29° 09' W
 S 79° 18' E
 0.25
 S 26° 22' E
 S 73° 32' W
 S 20° 12' W
 S 29° 09' W
 S 79° 18' E
 0.25
 S 26° 22' E
 S 73° 32' W
 S 20° 12' W
 S 29° 09' W
 S 79° 18' E
 0.25
 S 26° 22' E
 S 73° 32' W
 S 20° 12' W
 S 29° 09' W
 S 79° 18' E
 0.25

N 5° 03' 45"
 E. chimm P. P. Thomas
 27.10
 13.00
 3. Line Butler
 47.5
 NSL 40E

Plain City Canal

2763.42 ft
 4187 ch
 N 62° 19' E
 Egtie
 1.23
 86° 35' E
 E. chimm P. D. L.

337
 S 54° 40' W
 E. chimm W. D. L.
 S 45° 54' N
 9.68 ch.
 N 61° 17' E
 Egtie
 N 92° 35' E
 J. H. Butler

Base Line at Ogden
 True Cor.
 S 82° 57' E
 E. chimm John Butler
 S 32° 50' 14' E
 N. chimm Geo. Butler
 S 32° 50' 17' E
 E. chimm H. Butler

Butler Corner
 S 19° 51' E
 N. W. Cor. Peery-Mills
 S 19° 51' E
 E. chimm H. Butler
 S 21° 17' E
 E. chimm J. H. Butler
 S 10° 26' E
 E. chimm J. H. Butler
 S 85° 40' E
 2.77
 N 22° 23' 30" W
 N 62° 02' 42" W
 S 20° 12' W
 S 5° 41' W
 E. chimm Peery-Mills

N 89° 04' W four Rod Street.

Broom
 N 81° 44' W
 S 8° 11' 44" E
 E. chimm Salsky
 5.21
 127
 3.79
 S 84° 09' W
 E. chimm allen
 16.27
 N 37° 22' W
 E. chimm W. Butler
 N 10° 18' W
 E. chimm W. Butler
 N 22° 02' E
 E. chimm Peery-Mills
 N 20° 12' W
 E. chimm Peery-Mills
 N 38° 22' E
 E. chimm Tracy
 N 56° 16' E
 Egtie
 1.73
 S. E. Cor. N.W. 1/4 Sec. 19
 South line of George & N. line of insdale
 Adair's land
 line between Miller & Allen
 S. E. Cor. N.W. 1/4 Sec. 19

8.92
 S 82° 57' E
 E. chimm Tracy
 S 4° 24' E
 Court House
 E. Line Joist

11/11
 666
 1666
 1036